





# FOR STARTERS



PER MONTH  
£950 Per Month

## MAIN COURSE

A spacious and well-positioned ground floor one-bedroom flat, just a short stroll from the heart of Stratford-upon-Avon.

Tucked away on a quiet residential road, this property offers a generous open-plan living space that combines the kitchen, dining, and sitting areas into one bright and sociable room—ideal for both relaxing and entertaining. The kitchen itself provides ample worktop space and storage, along with room for under-counter appliances.

The double bedroom is a great size, comfortably accommodating a large bed and additional furniture. Both the bedroom and living area benefit from large windows that flood the flat with natural light, creating a warm and inviting atmosphere throughout the day.

The bathroom is well-proportioned and fitted with a modern suite, including a shower over the bath and a heated towel rail.

Further highlights include the convenience of your own private entrance, a dedicated off-road parking space on the driveway to the front, and access to a well-kept communal garden at the rear—perfect for enjoying a quiet moment outside without the upkeep.

With its spacious layout, natural light, and excellent location close to the town centre, this flat would make an ideal first home, investment property, or base for someone looking to enjoy all that Stratford has to offer on foot.

Sorry no pets.  
Available from the 12th of July.





# LOCATION

Please see Tenancy Information under the Lettings heading on the toolbar on our website.

## KEY INGREDIENTS



Tenure



Council Tax  
Band - C



EPC  
Band - D



TBC

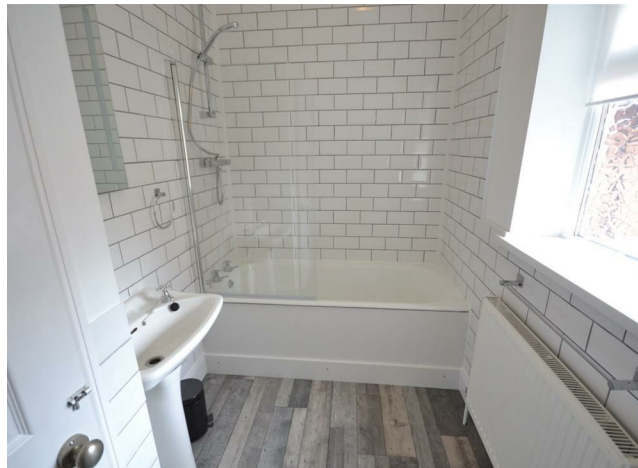


Heating system  
TBC



TBC

WHY NOT TAKE  
A LOOK INSIDE?  
GIVE US A CALL  
01789 414222



**FOR MORE INFO AND  
TO SEE OUR OTHER  
LOVELY PROPERTIES  
CHECK OUT OUR WEBSITE**

**MOVEWITHEDWARDS.CO.UK**

**HAVE YOU GOT  
A PROPERTY  
TO SELL?  
WE'D LOVE TO  
HAVE A CHAT  
01789 414222**

**DID YOU KNOW WE ALSO  
DO MORTGAGES.  
FOR FREE ADVICE  
SPEAK TO  
ONE OF OUR  
CONSULTANTS**

